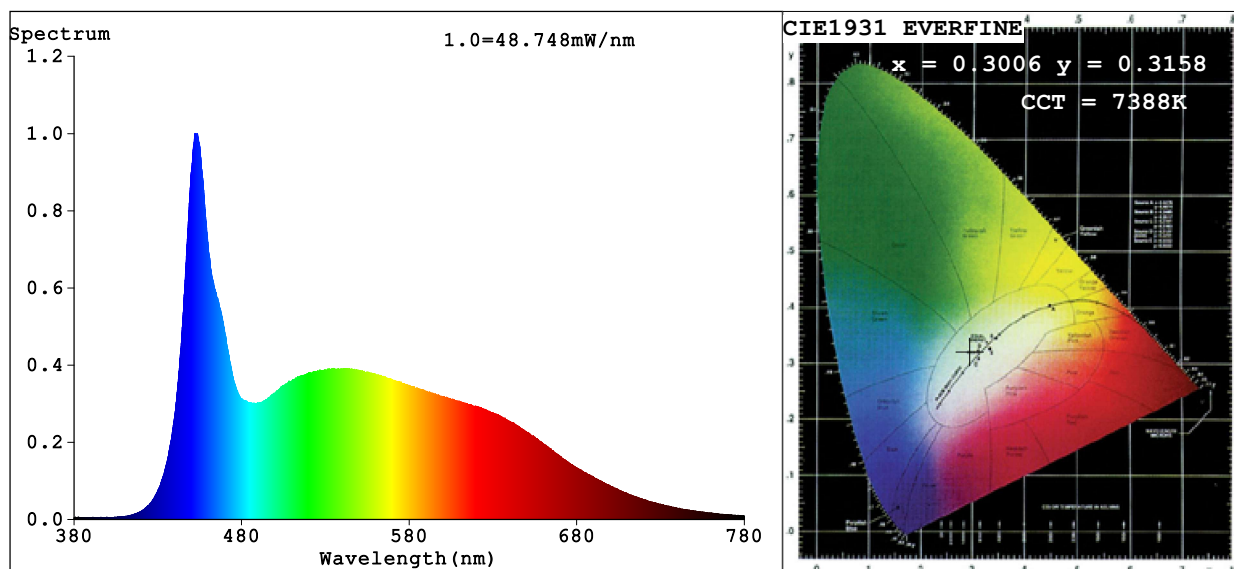


Spectrum Test Report



Color Parameters:

Chromaticity Coordinate: $x=0.3006$ $y=0.3158$ $u'=0.1943$ $v'=0.4592$

CCT=7388K (Duv=0.0027) Dominant WL:Ld =484.5nm Purity=12.5%

Ratio:R=14.1% G=78.5% B=7.3%; Peak WL:Lp=452.3nm FWHM=24.7nm

Render Index:Ra=92.3 CRI=89.1 TM30:Rf=88 Rg=97

R1 =93 R2 =97 R3 =96 R4 =89 R5 =91 R6 =91 R7 =93

R8 =88 R9 =70 R10=91 R11=90 R12=63 R13=96 R14=98 R15=91

Photo Parameters:

Flux = 1257 lm Eff. : 87.07 lm/W Fe = 4.549 W

Electrical parameters:

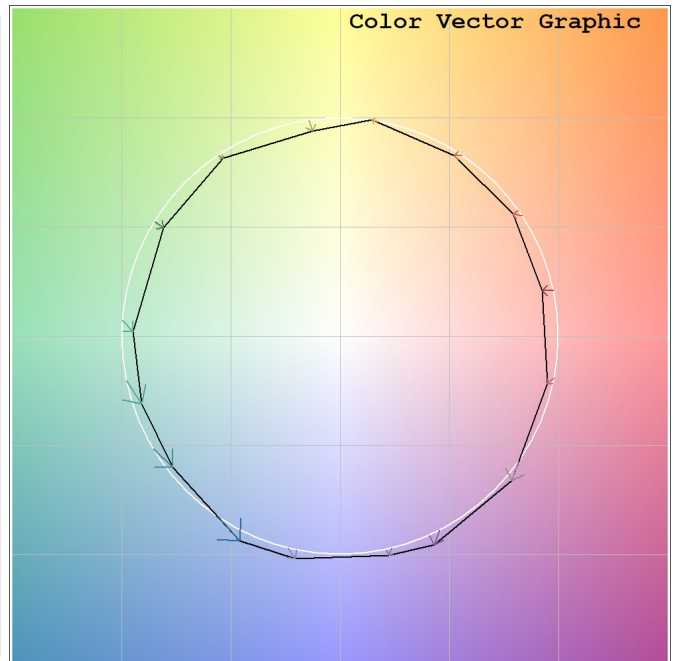
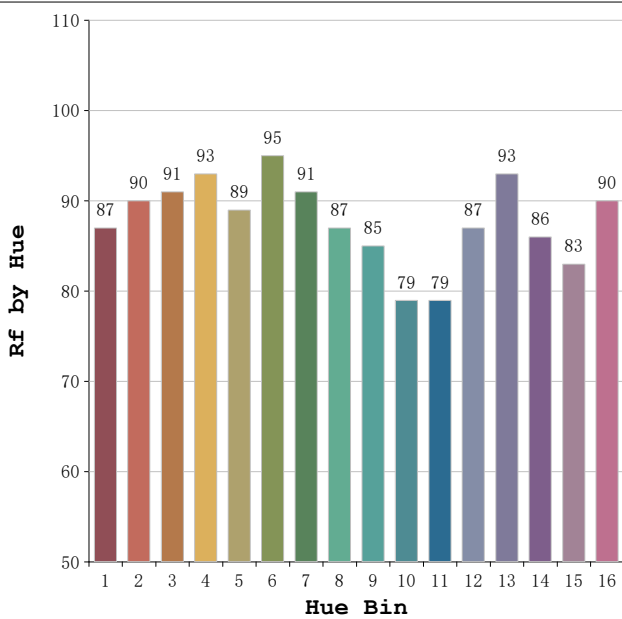
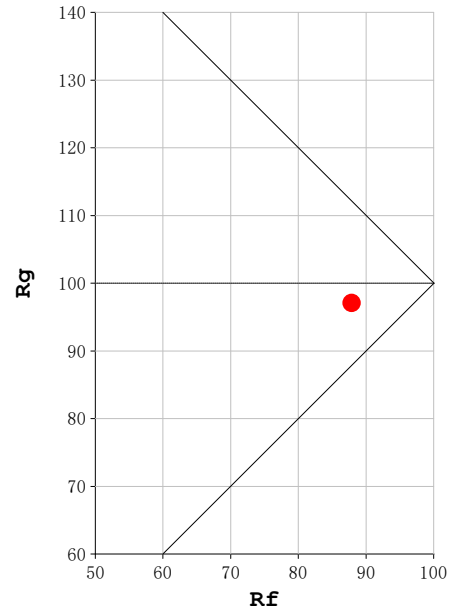
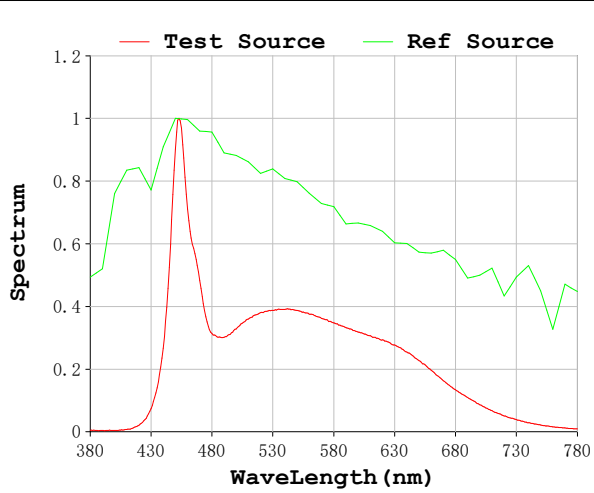
V = 23.998 V I = 0.6018 A P = 14.44 W PF = 1.000

Status: Integral T = 500 ms Ip = 32891 (50%)

Model:Ecoled Zafiro 7800k
Tester:Sergio Carneros
Temperature:27Deg
Manufacturer:Luz Negra S.L

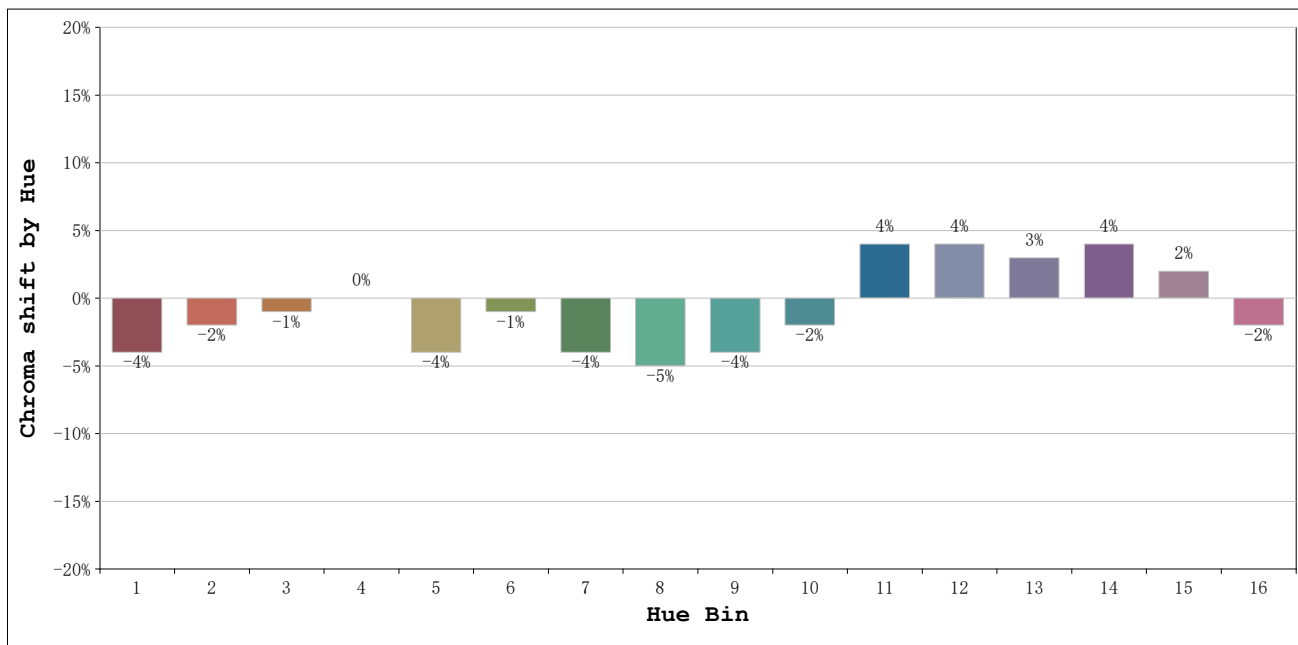
Number: 31.094
Date:2025-11-17 08:13:27
Humidity:40%
Remarks:100cm de tira flexible

Rf: 88 **CCT: 7388 K** **u': 0.1943**
Rg: 97 **Duv: 0.0027** **v': 0.4592**



Model:Ecoled Zafiro 7800k
 Tester:Sergio Carneros
 Temperature:27Deg
 Manufacturer:Luz Negra S.L

Number: 31.094
 Date:2025-11-17 08:13:27
 Humidity:40%
 Remarks:100cm de tira flexible



			Graphic shift(%)	
Hue Bin	Hue Angle	Rf	Chroma	Hue
1	0.0° - 22.5°	87	-4	1
2	22.5° - 45.0°	90	-2	3
3	45.0° - 67.5°	91	-1	3
4	67.5° - 90.0°	93	0	3
5	90.0° - 112.5°	89	-4	0
6	112.5° - 135.0°	95	-1	0
7	135.0° - 157.5°	91	-4	0
8	157.5° - 180.0°	87	-5	4
9	180.0° - 202.5°	85	-4	12
10	202.5° - 225.0°	79	-2	12
11	225.0° - 247.5°	79	4	14
12	247.5° - 270.0°	87	4	4
13	270.0° - 292.5°	93	3	-1
14	292.5° - 315.0°	86	4	-5
15	315.0° - 337.5°	83	2	-8
16	337.5° - 360.0°	90	-2	-2

Model:Ecoled Zafiro 7800k
 Tester:Sergio Carneros
 Temperature:27Deg
 Manufacturer:Luz Negra S.L

Number: 31.094
 Date:2025-11-17 08:13:27
 Humidity:40%
 Remarks:100cm de tira flexible